

**Elements of the fixture:**



Extrusion (A)



Gland (B)



End Cap (C)



LED tape  
in silicone  
sleeve (D)



Pad (E)



Cover (F)



Waterproof  
coupler (G)

**Tools needed for mounting:**

- drill
- mounting adhesive
- silicone

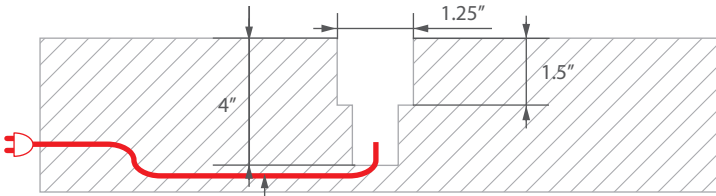
**NOTE!** All LED strips must be connected to a 12 V or 24 V power supply.

**IMPORTANT:** The manual presents the simplest mounting procedure. More mounting procedures and related accessories can be found at [klusdesign.com](http://klusdesign.com)

Turn off LED lights during peak day light hours in outdoor applications to avoid excessive heat buildup which will result in diminished LED life.

**1.** Prepare the groove in concrete with the space for the fixture, gland, waterproof coupler and the wire. The width of the groove should be at least 1.25". Prepare the conduit in or below the concrete for the wire.

front view

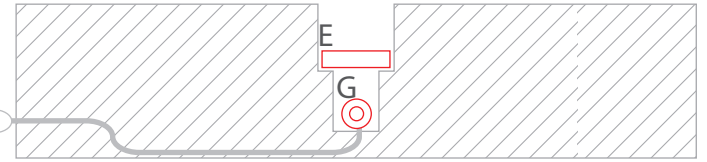


side view



**2.** Connect the wire to the waterproof coupler (G), (more information about waterproof couplers on [www.klusdesign.com](http://www.klusdesign.com)). Insert the pad (E).

front view

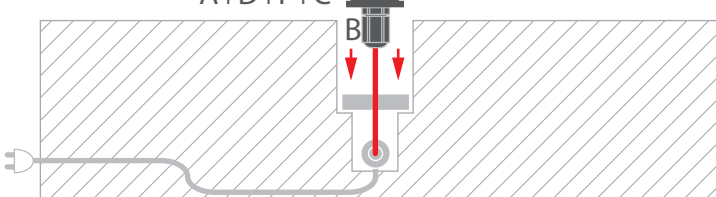


side view



**3.** Connect the wire from the Gland (B) in the fixture (A+D+F+C) to the coupler and insert the fixture into a groove.

front view

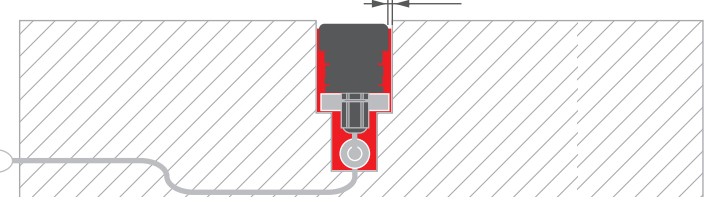


side view



**4.** Insert the grout in the free space inside the groove. The space between the fixture and the groove must have at least 3/16".

front view



side view

